



FICHA TÉCNICA DE PRODUTO

PRODUCT DATASHEET

---

HMI – Automação e Instrumentação, Lda.

---

Rua dos 5 Caminhos, nº 570  
4780-382 Santo Tirso  
PORTUGAL

Tel. +351 252 850 501  
Fax. +351 300 013 487

Web: [www.hmi.pt](http://www.hmi.pt)

Email: [hmi@hmi.pt](mailto:hmi@hmi.pt)

## MS10

# Buoyancy level switch K-TEK products

## Measurement made easy



### Introduction

The MS10 is a single-pole, double-throw electric switch capable of sensing the liquid level inside a process vessel. The unit is typically mounted via the integral 1-1/2" MNPT connection. Several standard adapters are available for use when a 1-1/2" FNPT is not available on the vessel. The MS10 requires no preventative maintenance as it is totally sealed. The MS10 provides either a normally open or normally closed dry contact to activate external devices such as alarms or solenoids. Variations in process fluid specific gravity have minimal effect on the level measured because of the small size of the integral float.

### Features

- Electrical Contacts are Magnetically Isolated from Process
- Mounting Via 1-1/2" NPT Process Connection
- Optional Flange Mounting Adapters Available
- Hermetically Sealed SPDT Switch (NO / NC Contact)
- Vibration Resistant
- Switch is Totally Enclosed within Stainless Steel Housing
- Hex Shaped Housing & SPDT Contacts Allow for Easy Installation
- FM, CSA, ATEX and GOST Russia Approved
- CRN Registered

## SPECIFICATIONS

Switch type	Magnetically actuated, hermetically sealed, bi-stable switch. Single pole, double throw (Form C)
Contact Material	Rhodium alloy
Switch Action	Break before make
Max Deadband	Approx. +/- 0.50" of float travel
Contact Ratings	AC rating (max): 250 V or 1 amp resistive or 100 VA DC rating (max): 125 V or 0.5 amp resistive or 100 W Lamp Load Rating: 1/3 A @ 125 VAC <b>See IR10 for higher Switch Contact Ratings</b>
Process Temp.	-40 to 450°F / -40 to 232°C Contact factory regarding use in colder applications
Contact Temp.	-40 to 302°F / -40 to 150°C
Maximum Pressure	1500 psig / 103 bar standard 5000 psig / 345 bar with HP option
Customer Connections	1-1/2" MNPT Process, 1/2" FNPT conduit and AWG 20 wiring harness (18 inch). MS-10 housing is 2" Hex for tightening into process connection
Insertion Length	4" (101mm) Standard; Optional 5" (127mm), 6" (152mm) or 6-1/2" (165mm) Up to 14" (356mm) Insertion Length
Materials	316/L Stainless Steel
Specific Gravity	0.4 Minimum (Clean Fluids)

**Consult Factory for Special Application Requirements**

## APPROVALS

**Factory Mutual Research Corp and CSA Canadian Standards Associations Hazardous Locations:**

**FM**



XP CL I, Div 1 & 2, GP A,B,C,D  
T6@Ta=176°F (80°C)



DIP CL II, Div 1 & 2, GP E,F,G CL III  
I /1 / AEx d IIC T6@Ta=176°F(80°C)  
IS I /1 / A,B,C,D T6@Ta=176°F(80°C)  
I /0/ AEx ia IIC T6@Ta=176°F(80°C)

**ATEX**



II 1 G EEx ia IIC T6  
(-40°C < Tamb < +80°C)  
(-40°F < Tamb < +176°F)

**GOST Russia**

0ExiaIIC T6 IP67

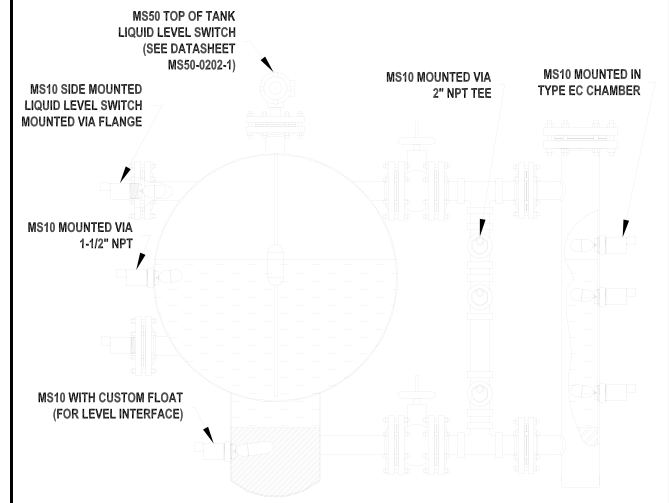
**GOST Kazakhstan**

0ExiaIIC T6 IP65



CRN Registered

## Sample Application Using K-TEK Level Switches



**ORDERING INFORMATION**

- Omit items that are standard or not required

MS10 / a / b / c / d / e:

**/a Process Connection**

**CAUTION: Requires minimum 2 1/2" nozzle ID.**

15	1 1/2" MNPT (Standard)
20	2" MNPT
S6	316/L Stainless Steel
S4	304/L Stainless Steel
CST	Carbon Steel
WPxx	Welded Flange (specify type, material & rating from SLG-0001-1 Flange Designation Chart)
FLxx	Loose Flange (specify type, material & rating from SLG-0001-1 Flange Designation Chart)

**Mounting Adapter Material**

T2	2" NPT, 3000# Modified Tee Includes 1 1/2" x 2" reducer bushing
S2	2" Socket Weld, 3000# Modified Tee Includes 1 1/2" x 2" reducer bushing

**/b Tag with Customer Specified Information**

X	None
NT	316 Stainless Steel Hanging Name Tag

**/c Insertion Length**

EXT1	4 in. / 101 mm Insertion Length (Standard)
EXT2	5 in. / 127 mm Insertion Length
EXT3	6 1/2 in. / 165 mm Insertion Length
EXT4	6 in. / 152 mm Insertion Length (HP Option Only)
EXTn	Custom Insertion Length n = 6 3/4" to 14 in / 168 to 356 mm

**/d Other Options**

X	None
HP	Up to 5000 psig / 345 bar 1. 3900 psig max with CRN approval. 2. Flanged process connection required. 3. Only available with EXT4 insertion length. 4. Contact factory regarding materials of construction. 5. Requires a 3 1/2" minimum nozzle ID.

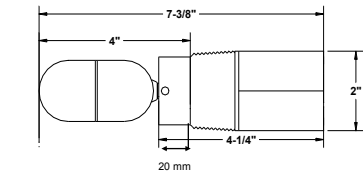
**/e Approvals**

X	None
FM	Factory Mutual
CSX	Canadian Standards Association Flameproof
CSI	Canadian Standards Association Intrinsically Safe
CEI	ATEX Intrinsically Safe
GR	GOST Russia
GK	GOST Kazakhstan

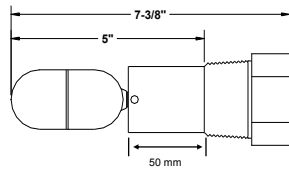


**Application Note** Inductive and Capacitive loads require special considerations.

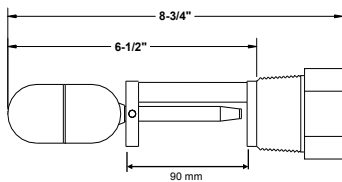
**Note** Contact factory for technical literature and/or applications assistance.



**/ EXT1 option (standard)**

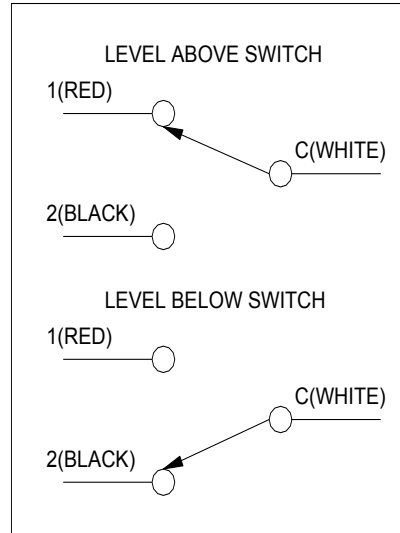


**/EXT2 option**

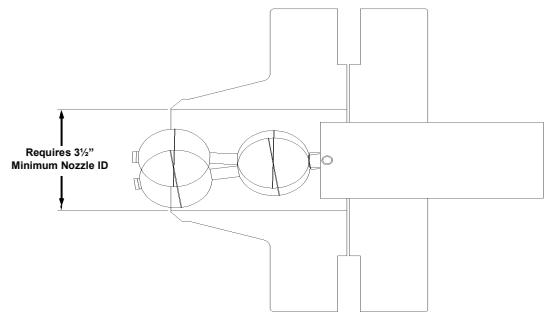


**/EXT3 option**

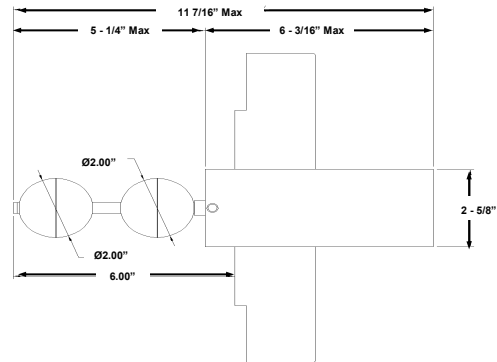
**Figure 1—Operation of Electrical Contacts**



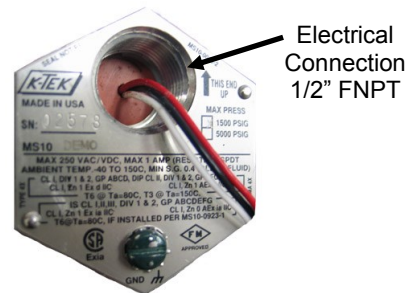
**HP Option Through Nozzle Installation**



**High Pressure (HP) / EXT 4 Option**









**Wiring Connection Photo**





## Our offering:

	Actuators and Positioners		Analytical Instruments
	Device Management, Fieldbus and Wireless		Flow Measurement
	Force Measurement		Level Measurement
	Natural Gas Measurement		Pressure Measurement
	Recorders and Controllers		Temperature Measurement

---

HMI – Automação e Instrumentação, Lda.

---

Rua dos 5 Caminhos, nº 570  
4780-382 Santo Tirso  
PORTUGAL

Tel. +351 252 850 501  
Fax. +351 300 013 487

Web: [www.hmi.pt](http://www.hmi.pt)

Email: [hmi@hmi.pt](mailto:hmi@hmi.pt)



# Contact us

## ABB Inc.

18321 Swamp Road  
Prairieville, LA 70769 USA  
Phone: +1 225 673 6100  
Service: +1 225 677 5836  
Fax: +1 225 673 2525  
E-mail: [quotes.ktek@us.abb.com](mailto:quotes.ktek@us.abb.com)  
Service e-mail: [ktek-service@us.abb.com](mailto:ktek-service@us.abb.com)

## ABB Inc.

585, Boulevard Charest E., Suite 300  
Quebec, QC Canada G1K 9H4  
Phone: +1 418 877 2944  
Service: +1 800 858 3847  
Fax: +1 418 877 2834  
E-mail: [qc\\_rfq@ca.abb.com](mailto:qc_rfq@ca.abb.com)  
Service e-mail: [laserscanner.support@ca.abb.com](mailto:laserscanner.support@ca.abb.com)

## ABB Engineering (Shanghai) Ltd.

No. 5, Lane 369, Chuangye Road  
Kangqiao Town, Pudong District  
Shanghai, 201319, P.R. China  
Phone: +86 10 64231407  
Service: +86 21 61056421  
Fax: +86 10 64371913  
E-mail: [shan.li@cn.abb.com](mailto:shan.li@cn.abb.com)  
Service e-mail: [rola.li@cn.abb.com](mailto:rola.li@cn.abb.com)

## ABB Limited

Salterbeck Trading Estate  
Workington, Cumbria, England CA14 5DS  
Phone: +44 7885333752  
Service: +44 145 3826661  
E-mail: [enquiries.mp.uk@gb.abb.com](mailto:enquiries.mp.uk@gb.abb.com)  
Service e-mail: [abb.service@gb.abb.com](mailto:abb.service@gb.abb.com)

[www.abb.com/level](http://www.abb.com/level)

### Note:

We reserve the right to make technical changes or modify the contents of this document without prior notice. With regard to purchase orders, the agreed particulars shall prevail. ABB does not accept any responsibility whatsoever for potential errors or possible lack of information in this document.

We reserve all rights in this document and in the subject matter and illustrations contained therein. Any reproduction, disclosure to third parties or utilization of its contents – in whole or in parts – is forbidden without prior written consent of ABB.

All copyrights and trademarks are the property of their rightful owners.

Copyright© 2013 ABB  
All rights reserved



Sales



Service